



CHRISTOPHER ROSE
Christopher Rose
Architects, PA

"NO MATTER WHERE YOU STAND IN THIS UPDATED BEACH COTTAGE, YOU'LL TAKE IN INCREDIBLE VIEWS. IT WAS CAREFULLY DESIGNED WITH SIMPLE GEOMETRY TO CAPTURE THE SIGHTS AND SEA BREEZES. EVERY BEDROOM HAS LARGE EUROPEAN GLASS DOORS OPENING ONTO DECKS TO ENCOURAGE INTERACTION WITH NATURE AND BLUR THE LINES BETWEEN INSIDE AND OUT."

WINDWARD

architect: Christopher Rose

landscape architects:

Sheila Wertimer & Cindy Cline

heated square feet: 2,868

total square feet: 4,215

GROUND LEVEL

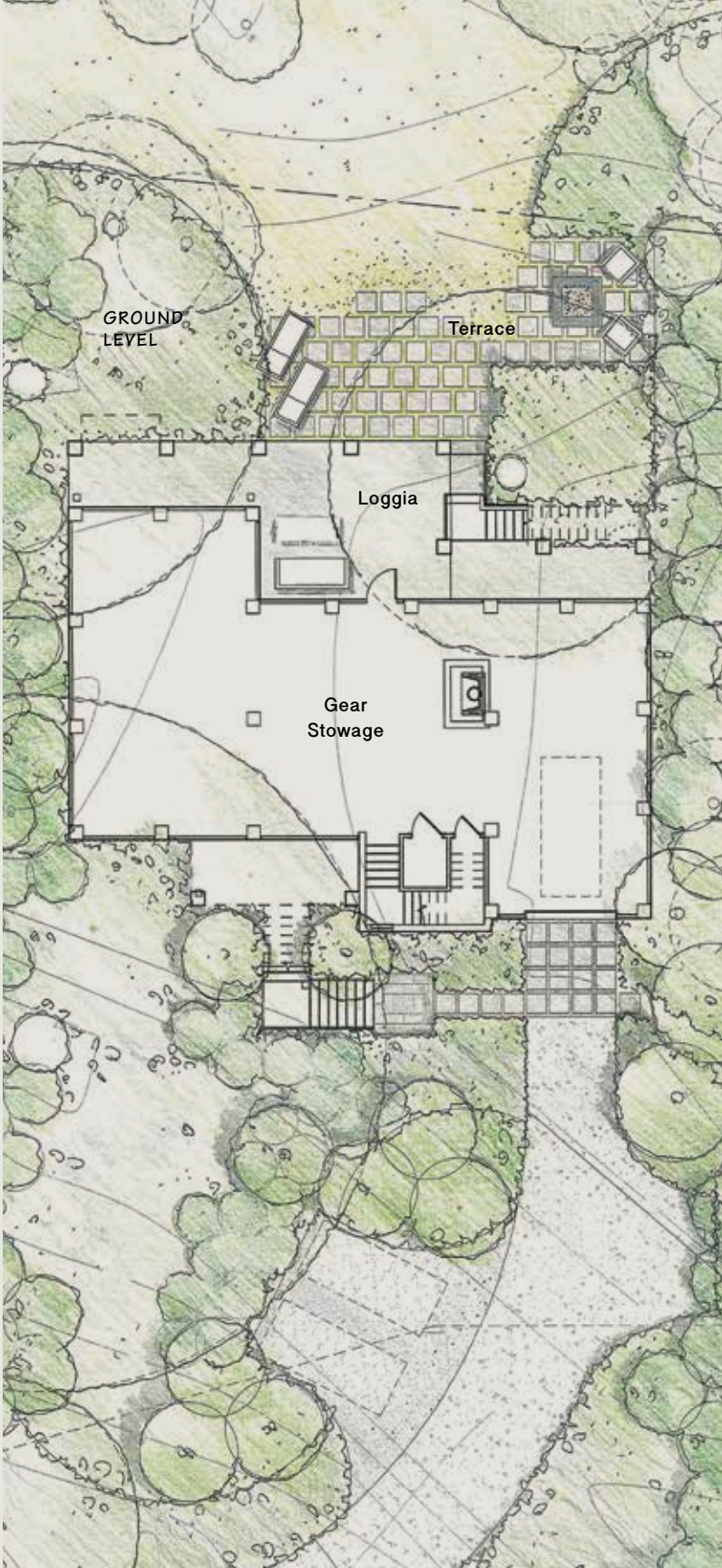
Loggia	19' x 16'
Terrace	20' x 16'
Gear Stowage	23' x 12'

FIRST FLOOR

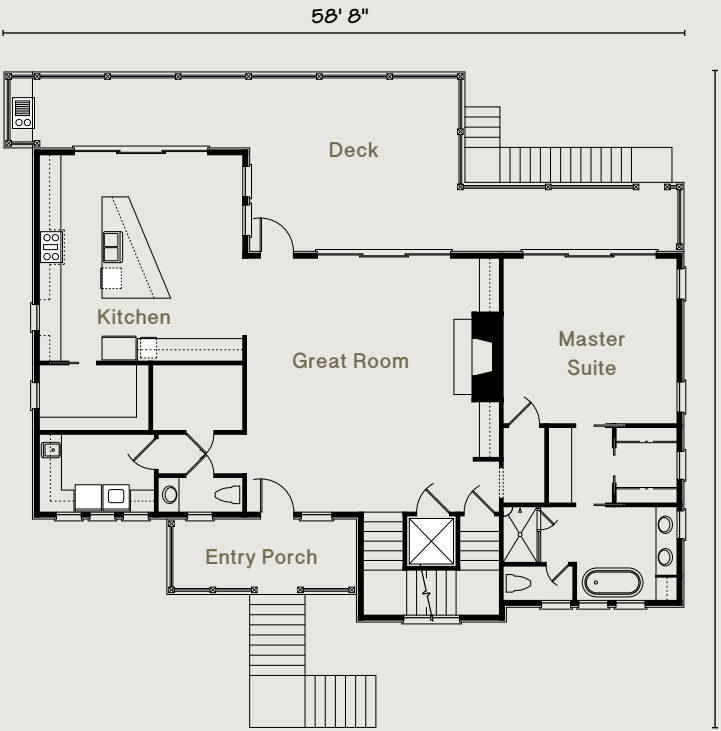
Entry Porch	17' x 7'
Great Room	23' x 23'
Kitchen	19' x 19'
Master Bedroom	15' x 16'
Deck	58' x 16'

SECOND FLOOR

Upper Foyer	12' x 10'
Bedroom 2	12' x 13'
Bedroom 3	12' x 13'
Bedroom 4	12' x 13'
Deck	13' x 10'



FIRST FLOOR



SECOND FLOOR

