



Visuals are representative only and may differ from completed product. Pricing, improvements, facilities, and programs are in formative stages and subject to change without prior notice. This information is deemed reliable but not guaranteed. 10/2020



HEATHER WILSON
Heather A. Wilson,
Architect

"I designed the Peregrine using simple but classic regional forms to embrace the remarkable topography of the site. The glassy central living room creates a connection between the courtyard entry and the private outdoor space, so the line between inside and out becomes blurred and the homeowner can be truly immersed in the environment. In all the living spaces, the architecture is about framing the views while quietly settling into the landscape."

PEREGRINE

architect: Heather Wilson

landscape architects:

Sheila Wertimer & Cindy Cline

heated square feet: 3,454

total square feet: 3,982

GROUND LEVEL

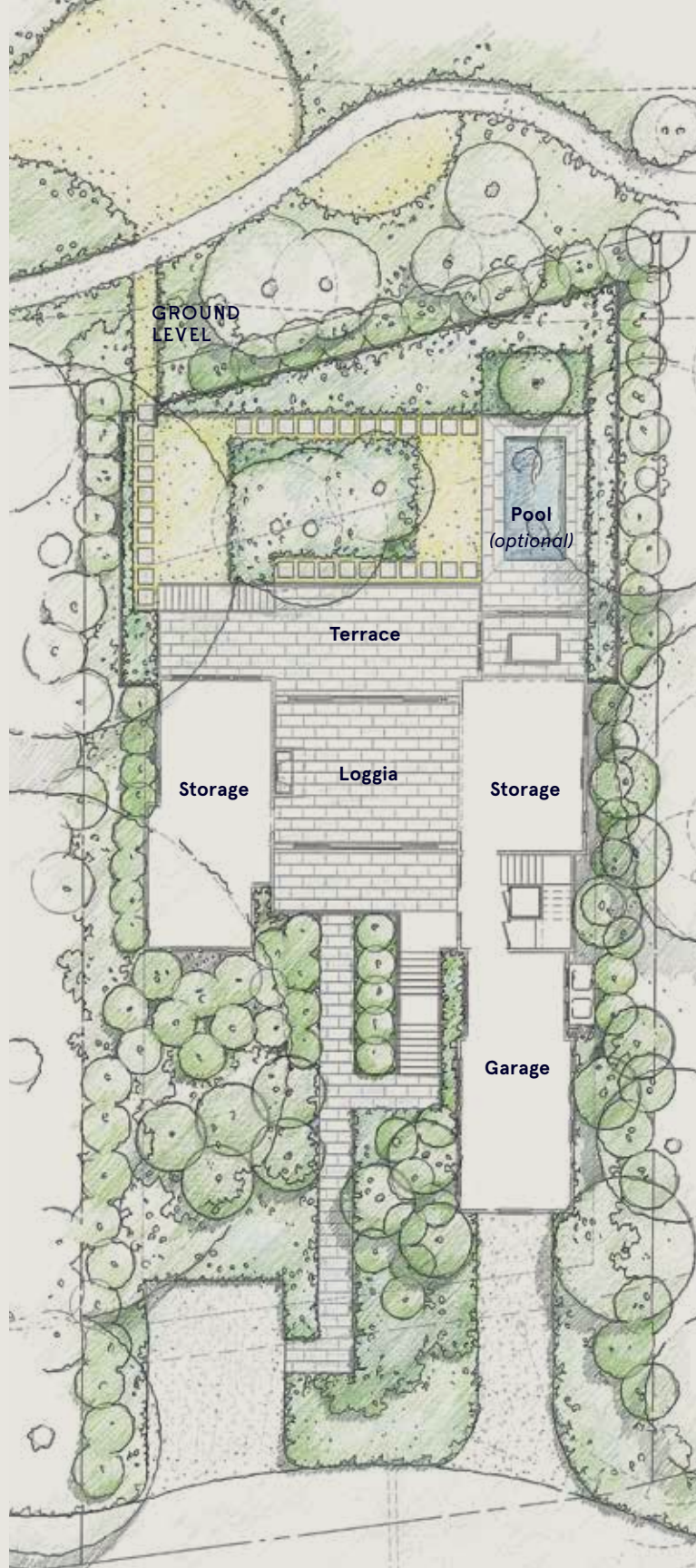
Loggia	19' x 16'
Terrace	20' x 16'
Storage	16' x 34'
Storage	16' x 22'
Garage	15' x 31'

FIRST FLOOR

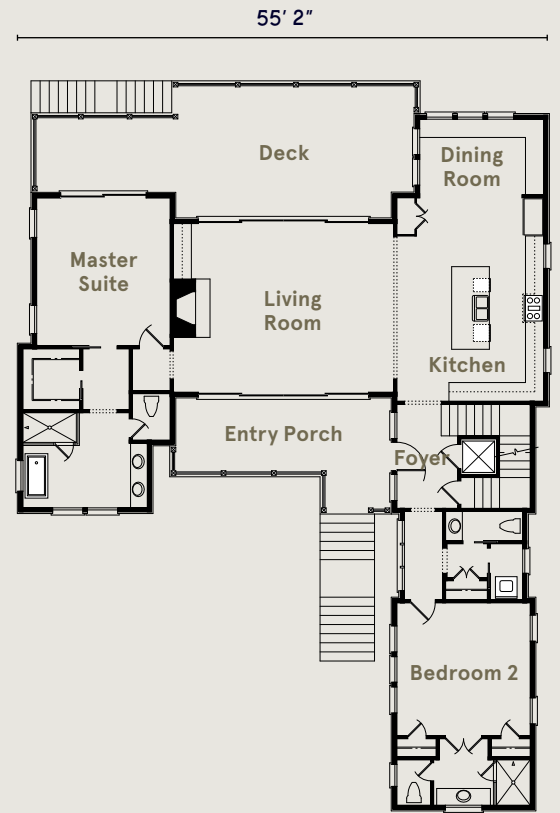
Kitchen	16' x 23'
Dining Room	14' x 8'
Entry Foyer	7' x 11'
Living Room	24' x 18'
Master Bedroom	15' x 16'
Bedroom 2	15' x 15'
Entry Porch	24' x 8'
Deck	26' x 14'

SECOND FLOOR

Bedroom 3	15' x 13'
Upper Living Room	15' x 20'
Bedroom 4	15' x 16'



FIRST FLOOR



SECOND FLOOR

