

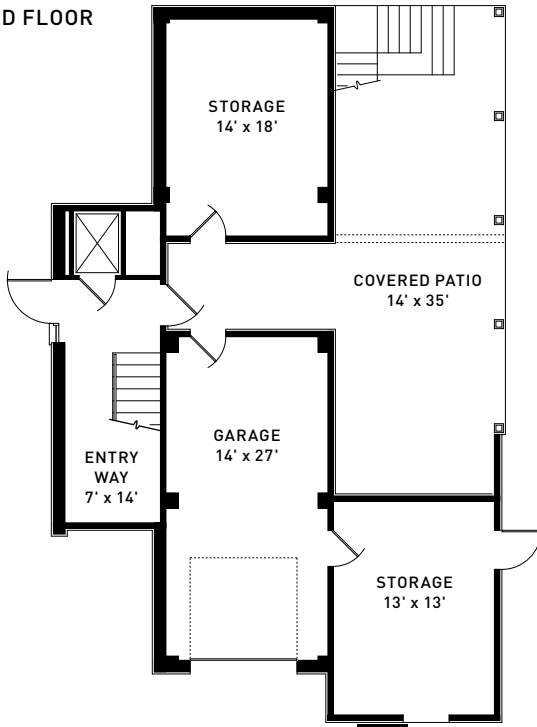
THE BIARRITZ | 4,226 SQUARE FEET



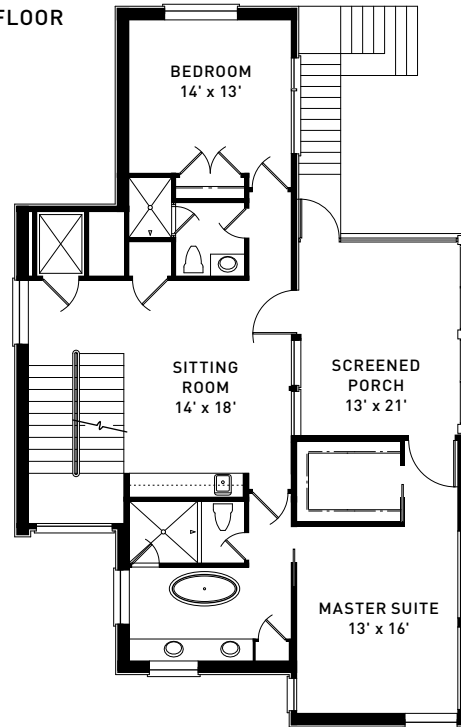
- Kiawah Island Club Membership
- 4 ensuite bedrooms, including 2 master suites (1 on the first level and 1 on the second level)
- Open floor plan on the third level with trellised terrace
- Ground level gathering space
- First level sitting area connected to double-height screened porch
- American white oak flooring
- Kitchen countertops in natural stone
- Kitchen cabinets with full-overlay maple doors, self-closing drawers and Euro hinges
- Sub-Zero® 36" refrigerator
- Wolf® range and hood
- Sub-Zero® 36" beverage center/wine cooler
- Henselstone windows
- Horizontal and vertical cedar siding with board-formed concrete and tabby accents
- Tropical hardwood decking
- 1 car garage and 2 additional parking spaces
- Elevator access to all floor levels
- Gas fireplaces at living area and screened porch

THE BIARRITZ | 4,226 SQUARE FEET

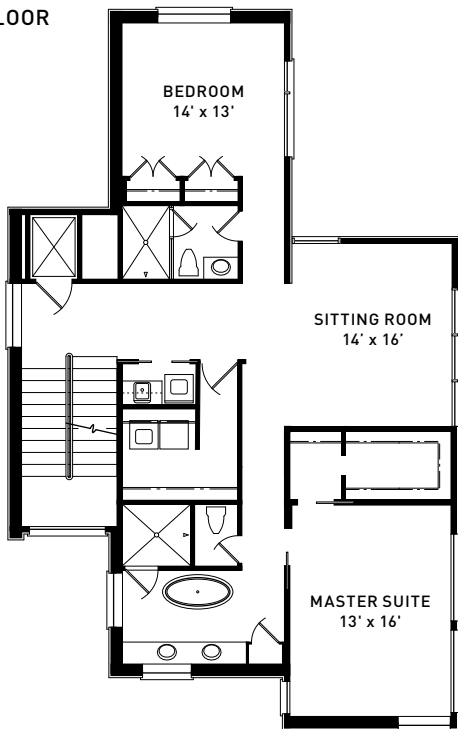
GROUND FLOOR



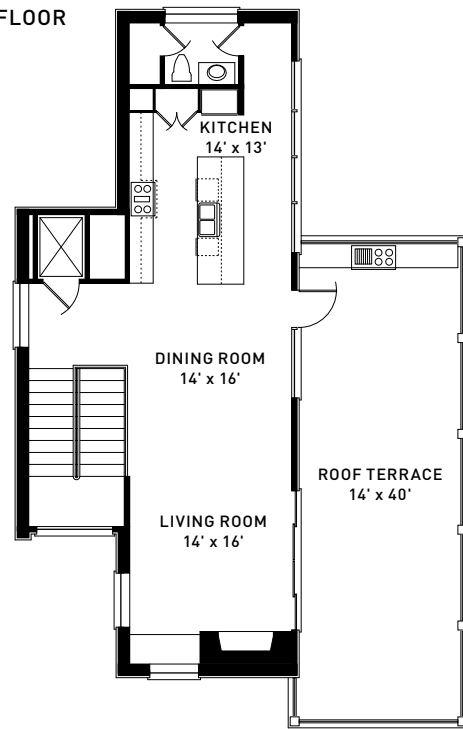
FIRST FLOOR



SECOND FLOOR



THIRD FLOOR



Kiawah Island
CLUB & REAL ESTATE

843.396.1522 | kiawahisland.com

Floor plans indicate approximate square footage and may vary from actual design specifications. Information is deemed reliable but not guaranteed.