

## PRESTWICK



The first floor's trio of gracious porches and a large second floor deck celebrate the pleasures of indoor/outdoor living and capture salty sea breezes throughout the day. And year-round entertainment and open-air dining are encouraged on both the covered porch and screened porch, complete with fireplace.

# PRESTWICK

architect: Clay Shackelford

landscape architect: Josh Dunn

heated square feet: 3,745

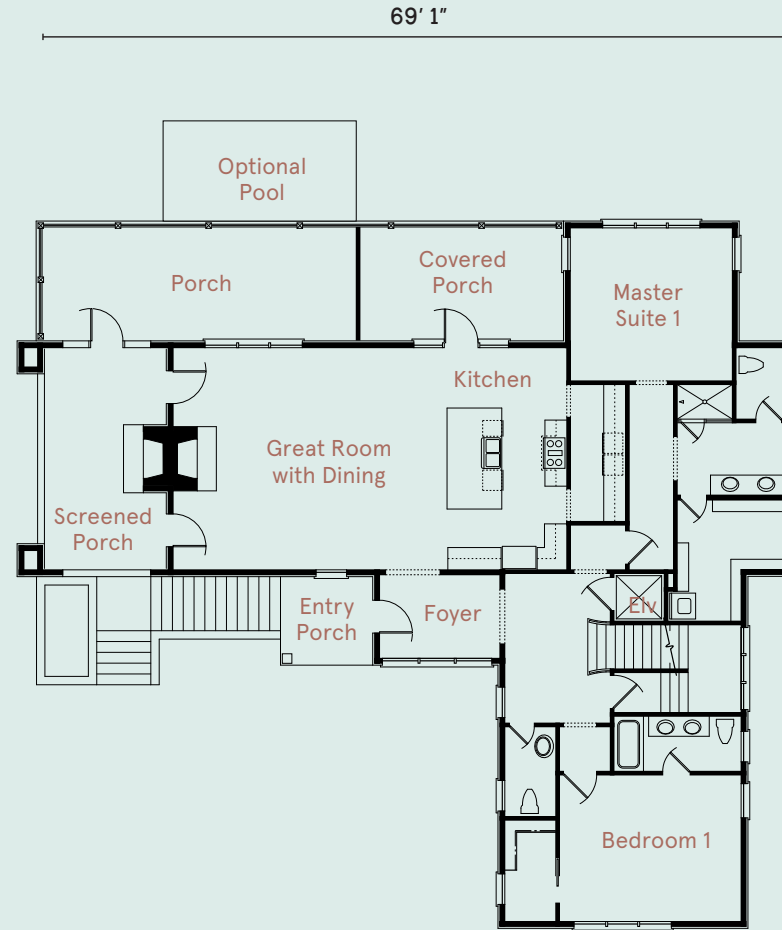
## FIRST FLOOR

Great Room with Dining	25' x 20'
Kitchen	11' x 20'
Master Suite 1	15' x 16'
Screened Porch	11' x 20'
Bedroom 1	17' x 13'
Entry Porch	8' x 8'
Foyer	11' x 8'

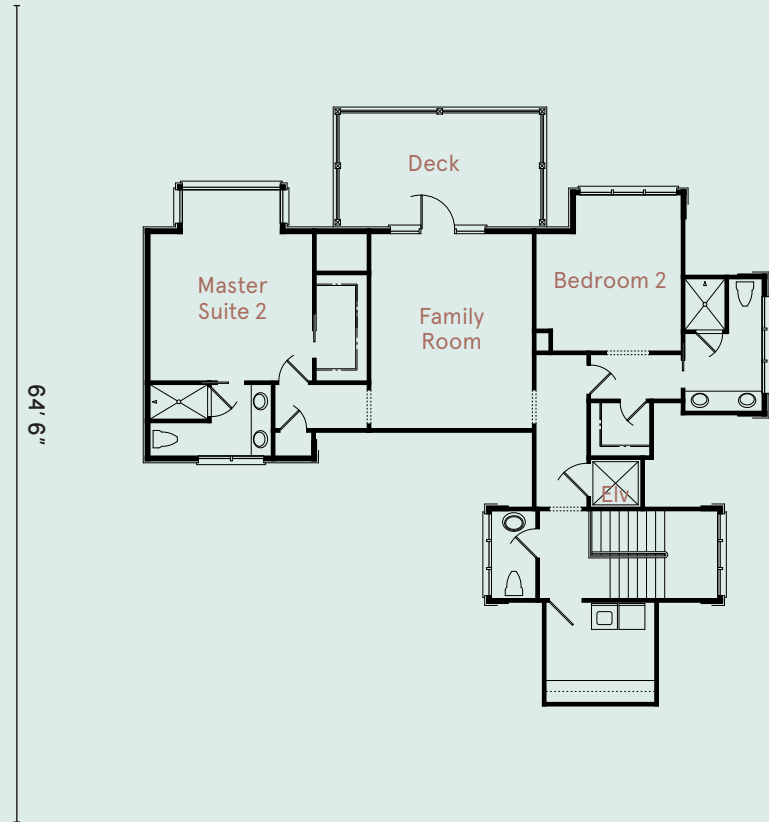
## SECOND FLOOR

Master Suite 2	15' x 18'
Bedroom 2	13' x 14'
Family Room	15' x 18'
Deck	19' x 10'

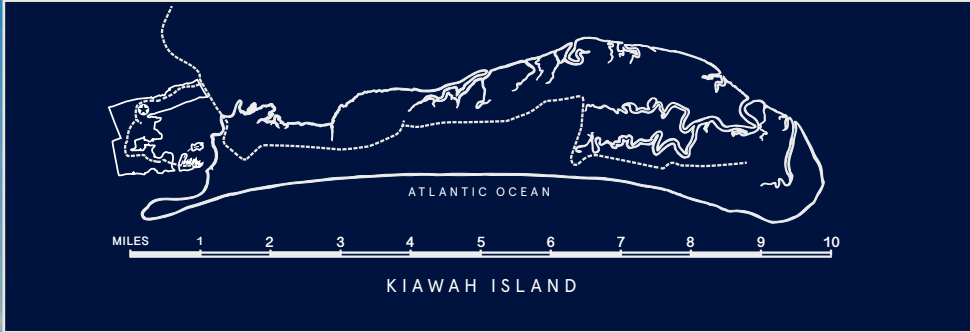
FIRST FLOOR



SECOND FLOOR







Visuals are representative only and may differ from completed product. Pricing, improvements, facilities, and programs are in formative stages and subject to change without prior notice. This information is deemed reliable but not guaranteed. 06/21

