

## PRESTWICK



The first floor's trio of gracious porches and a large second floor deck celebrate the pleasures of indoor/outdoor living and capture salty sea breezes throughout the day. And year-round entertainment and open-air dining are encouraged on both the covered porch and screened porch, complete with fireplace.

# PRESTWICK

architect: Clay Shackelford

landscape architect: Josh Dunn

heated square feet: 3,745

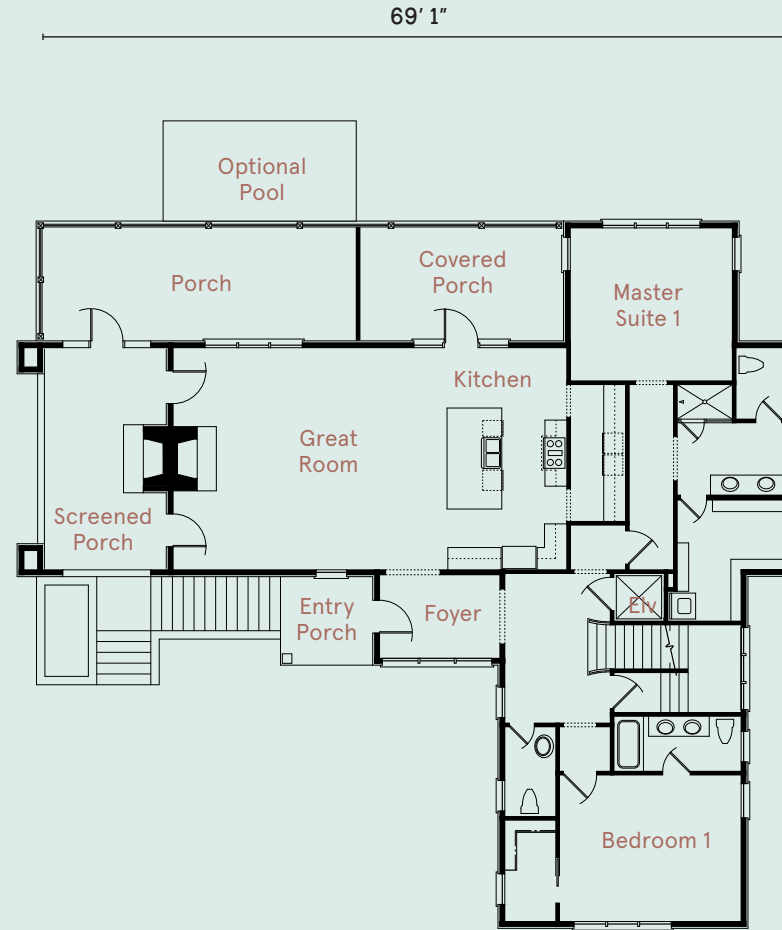
## FIRST FLOOR

Great Room	25' x 20'
Kitchen	11' x 20'
Dining Room	17' x 13'
Screened Porch	11' x 20'
Bedroom 1	17' x 13'
Entry Porch	8' x 8'
Foyer	11' x 8'

## SECOND FLOOR

Master Suite 2	15' x 18'
Bedroom 2	13' x 14'
Family Room	15' x 18'
Deck	19' x 10'

FIRST FLOOR



SECOND FLOOR

