

CRUDEN BAY



Great stretches of windows, expansive decks, and porches promise inspired entertaining set against a backdrop of the Lowcountry's most magnificent landscapes. The home's open floor plan encourages social gatherings with its interconnected stretch of living, dining, and kitchen, all boasting direct access to the vast covered porch.

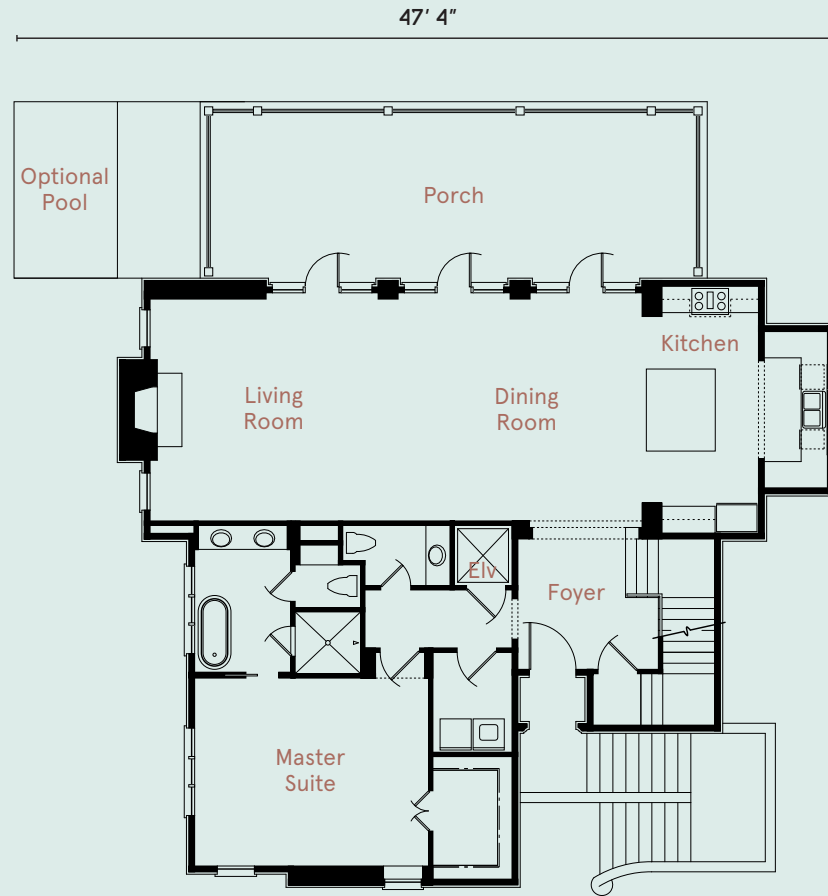
CRUDEN BAY

architect: Stan Dixon

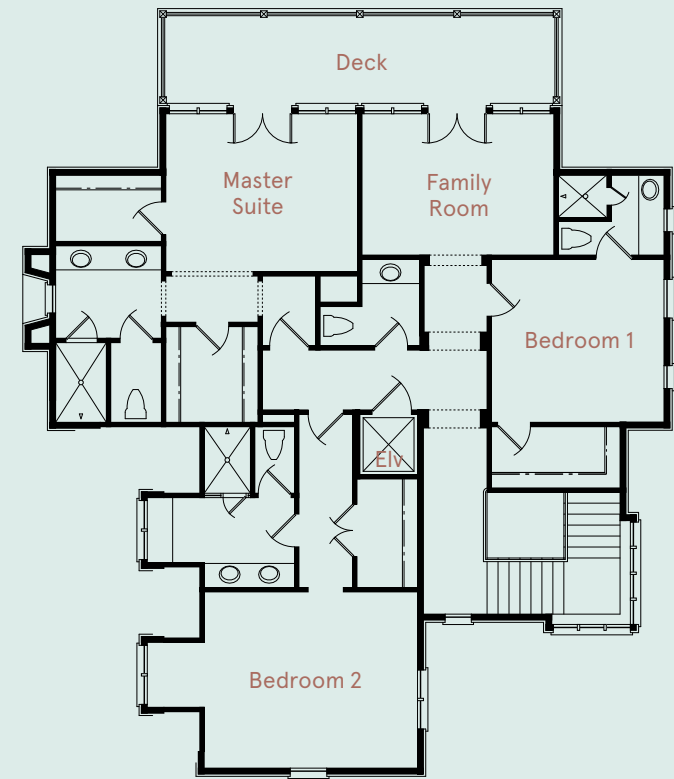
landscape architect: Josh Dunn

heated square feet: 3,615

FIRST FLOOR



SECOND FLOOR

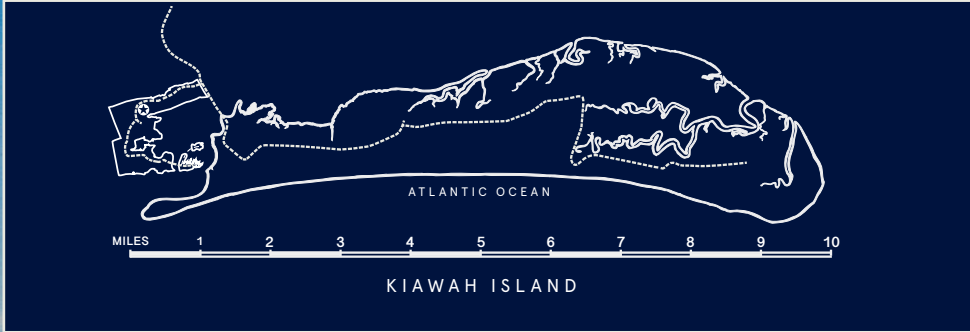


FIRST FLOOR

| | |
|--------------|-----------|
| Living Room | 19' x 17' |
| Dining Room | 19' x 17' |
| Kitchen | 14' x 19' |
| Foyer | 11' x 11' |
| Master Suite | 18' x 14' |
| Porch | 37' x 13' |

SECOND FLOOR

| | |
|--------------|-----------|
| Master Suite | 15' x 12' |
| Family Room | 15' x 11' |
| Bedroom | 13' x 12' |
| Bedroom | 16' x 13' |
| Deck | 30' x 7' |



Visuals are representative only and may differ from completed product. Pricing, improvements, facilities, and programs are in formative stages and subject to change without prior notice. This information is deemed reliable but not guaranteed. 06/21

