



A masterful reverse floor plan positions the main living areas on the second floor to maximize all-day enjoyment of the exquisite four-tiered views. In addition, first floor's combination of three ensuite bedrooms, generous family room and expansive rear deck ensures that overnight guests enjoy their own private retreat.

AILSA

architect: Clay Shackelford

landscape architect: Josh Dunn

heated square feet: 3,392

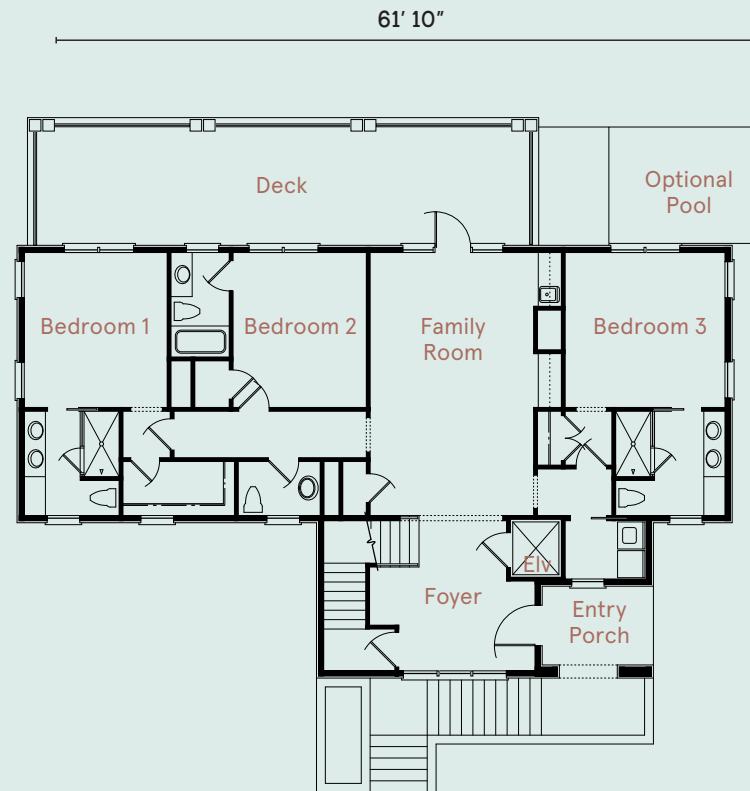
FIRST FLOOR

Family Room	14' x 23'
Bedroom 1	12' x 13'
Bedroom 2	12' x 13'
Bedroom 3	14' x 13'
Deck	43' x 10'
Entry Porch	10' x 7'
Foyer	14' x 13'

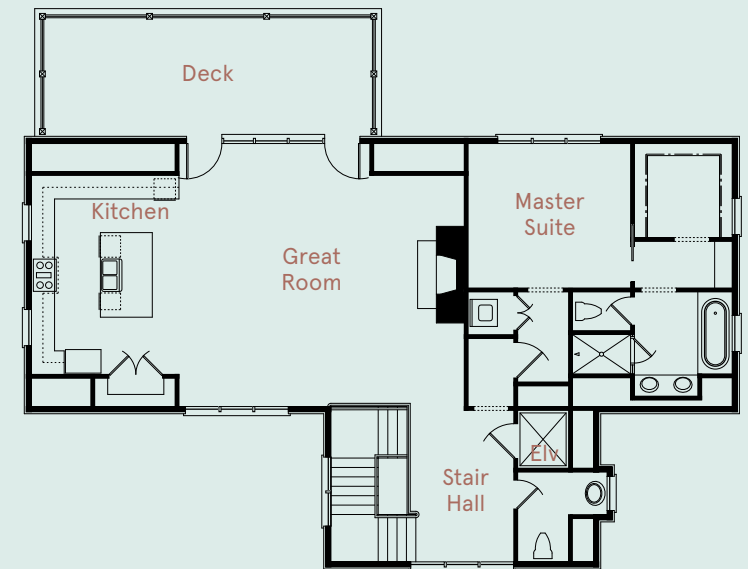
SECOND FLOOR

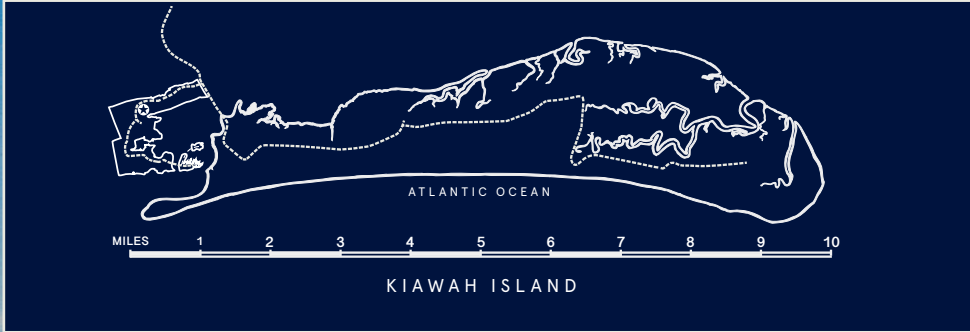
Kitchen	13' x 17'
Great Room	25' x 23'
Master Suite	14' x 13'
Deck	29' x 10'
Stair Hall	9' x 13'

FIRST FLOOR



SECOND FLOOR





Visuals are representative only and may differ from completed product. Pricing, improvements, facilities, and programs are in formative stages and subject to change without prior notice. This information is deemed reliable but not guaranteed. 06/21

