



JIM THOMAS
Thomas & Denzinger
Architects, PA

"THIS HOME INVITES ITS OCCUPANTS TO EXPERIENCE AN EXTRAORDINARY PHENOMENON OF NATURE WHERE THE OCEAN AND SKY MEET THE CONTINENT. WHAT APPEARS TO BE A GATEWAY BETWEEN THE TWO SIDES OF THE HOME IS IN REALITY A TRANSPARENT BRIDGE CONTAINING A SPACIOUS, AIRY LIVING AREA THAT LEAPS BETWEEN A KITCHEN/DINING WING AND A BEDROOM WING. UPSTAIRS, ONE DISCOVERS A ROOF TERRACE ABOVE THE BRIDGE."

SALT PANNE

architect: Jim Thomas
 landscape architects:
 Sheila Wertimer & Cindy Cline
 heated square feet: 3,133
 total square feet: 3,682

GROUND LEVEL

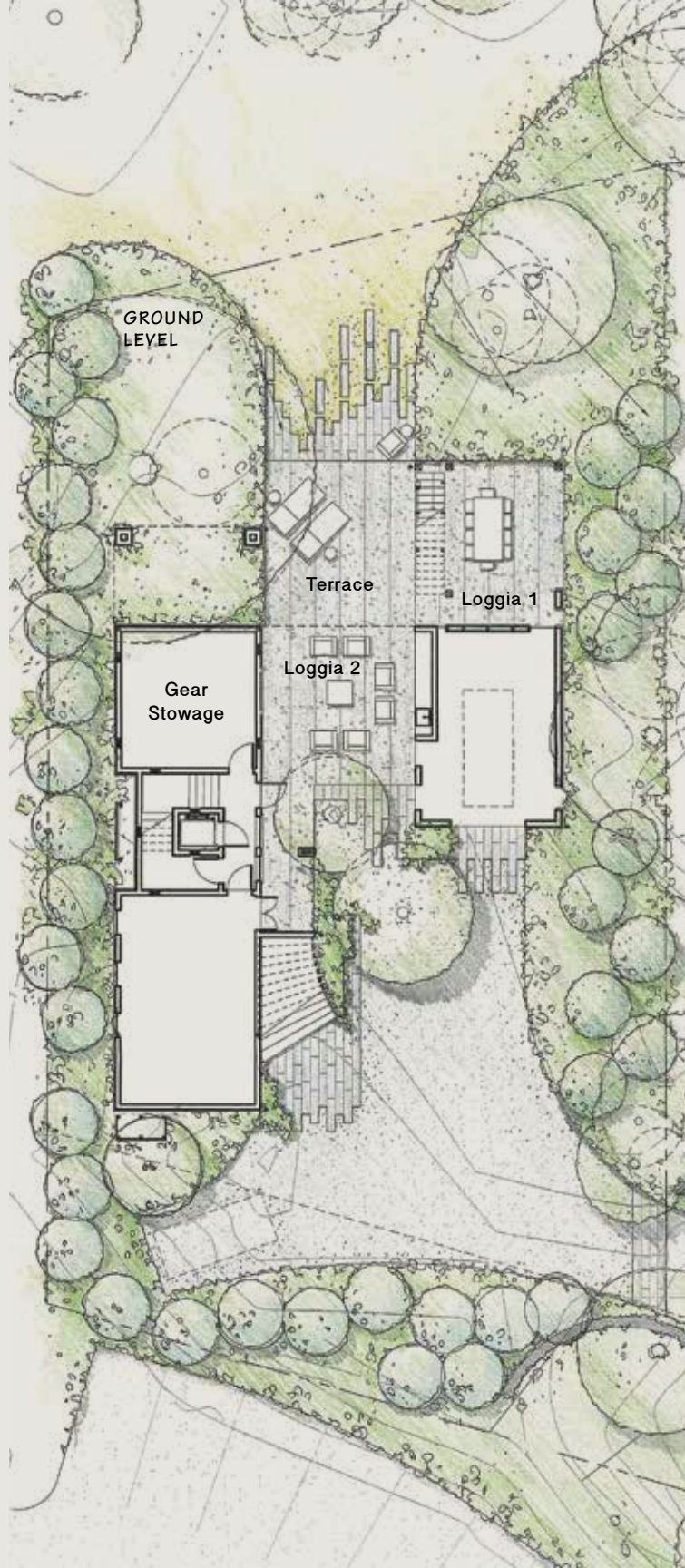
Loggia 1	18' x 20'
Terrace	18' x 20'
Loggia 2	18' x 19'
Gear Stowage	17' x 17'

FIRST FLOOR

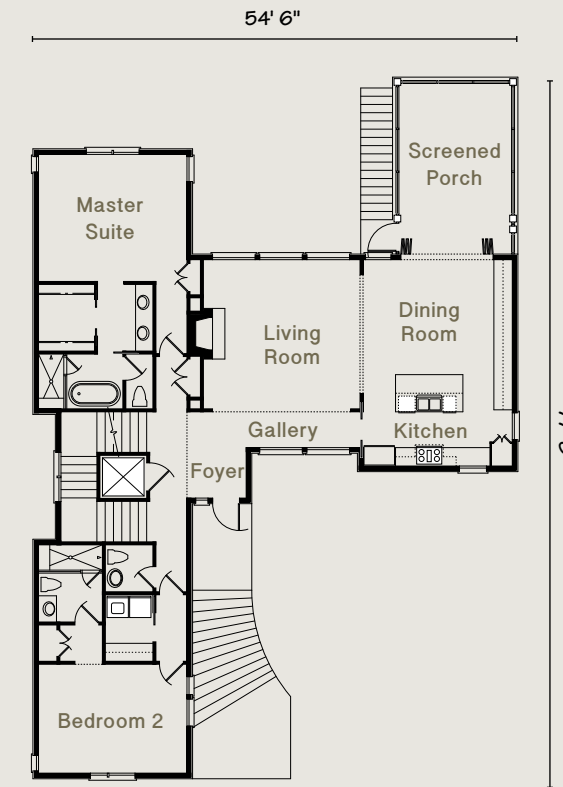
Foyer	11' x 10'
Gallery	13' x 4'
Living Room	17' x 17'
Dining Room	17' x 10'
Kitchen	17' x 10'
Screened Porch	13' x 20'
Master Bedroom	16' x 12'
Bedroom 2	17' x 12'

SECOND FLOOR

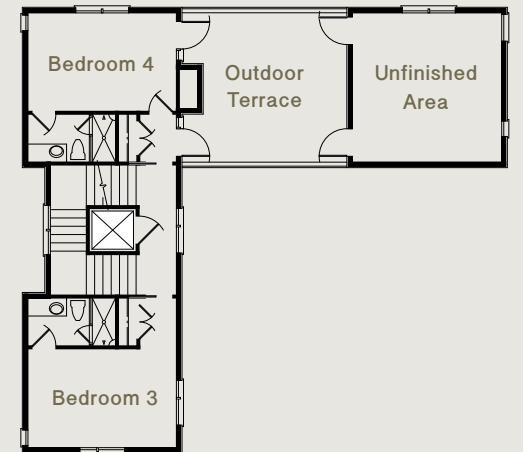
Bedroom 3	17' x 11'
Bedroom 4	17' x 12'
Outdoor Terrace	17' x 17'
Unfinished Area	17' x 17'
(Finished Study)	17' x 12'



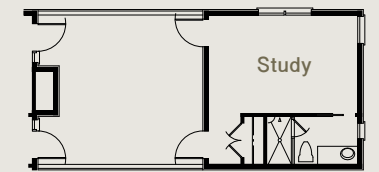
FIRST FLOOR



SECOND FLOOR



FINISHED PLAN (A)



FINISHED PLAN (B)