

800.277.7008 • 843.768.3400 | KiawahIsland.com • LifeAtKiawah.com
 1 Kiawah Island Parkway • Kiawah Island, South Carolina 29455

05/2016

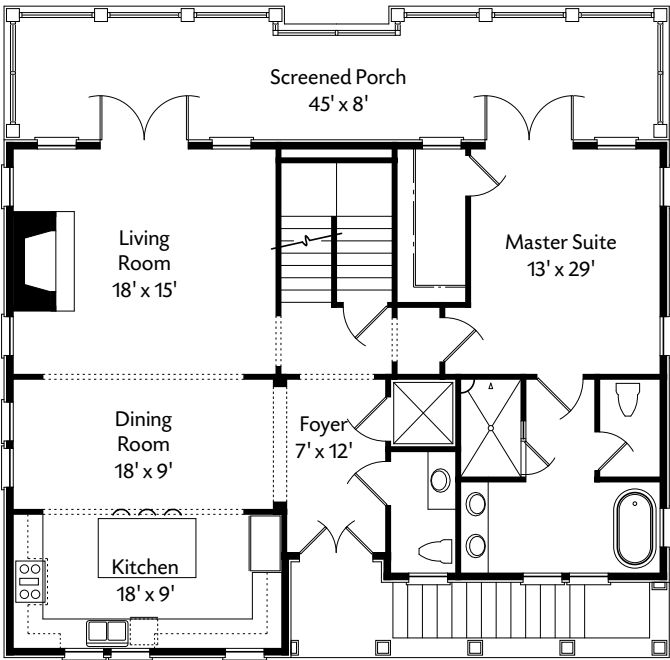
Visuals are representative only and may differ from completed product. Pricing, Improvements, facilities, and programs are subject to change without prior notice. This information is deemed reliable but not guaranteed.



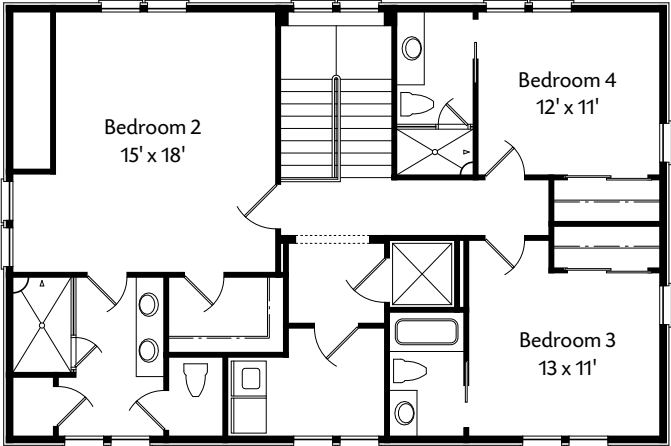
THE TUPELO

Running along the Kiawah River, eleven acres of riverfront terrain set the stage for inspired Island living. RiverView, a private, gated neighborhood of cottages and townhomes, partners stunning water vistas and sunset views with easy access to Kiawah’s most popular amenities. Here, residents will enjoy:

- Opportunities for Membership in the Kiawah Island Club
- A private neighborhood pavilion and pool
- A private neighborhood dock with kayak launch
- Walking distance to Beachwalker Park or Kiawah Island Club beach access
- Low maintenance island ownership due to high quality materials and products
- Envious proximity to Freshfields Village, the amenities of Cassique, and Night Heron Park
- The dining, social, and cultural offerings of Charleston, just 21 miles away



First Floor



Second Floor

4 Bedroom Plan	
Master Suite Downstairs	
1st Floor	1,420 sq. ft.
2nd Floor	1,221sq. ft.
Total Heated	2,641 sq. ft.
Covered Porches	450 sq. ft.

Floor plans indicate approximate square footage and may vary from actual design specifications. Information is deemed reliable but not guaranteed.

THE TUPELO

All-new construction and a Lowcountry-inspired design define the homes of RiverView. This newly built home will offer residents:

- 4-bedroom/4.5-bath home includes 2,641 heated and cooled sq. ft.
- Elegant entry foyer with open and accessible living areas
- 1st floor master suite is a private retreat
- Screened porch spans the width of the rear elevation
- Gourmet kitchen, custom cabinetry throughout, and pre-wired for home technology and entertainment systems
- White oak flooring standard throughout; reclaimed hardwood available
- Wood-burning fireplace with optional gas log upgrade
- Raised elevation for two-car garage and abundant storage space on ground floor
- Optional elevator upgrade
- Available under-house, climate controlled storage area