

800.277.7008 • 843.768.3400 | KiawahIsland.com • LifeAtKiawah.com
 1 Kiawah Island Parkway • Kiawah Island, South Carolina 29455

05/2016

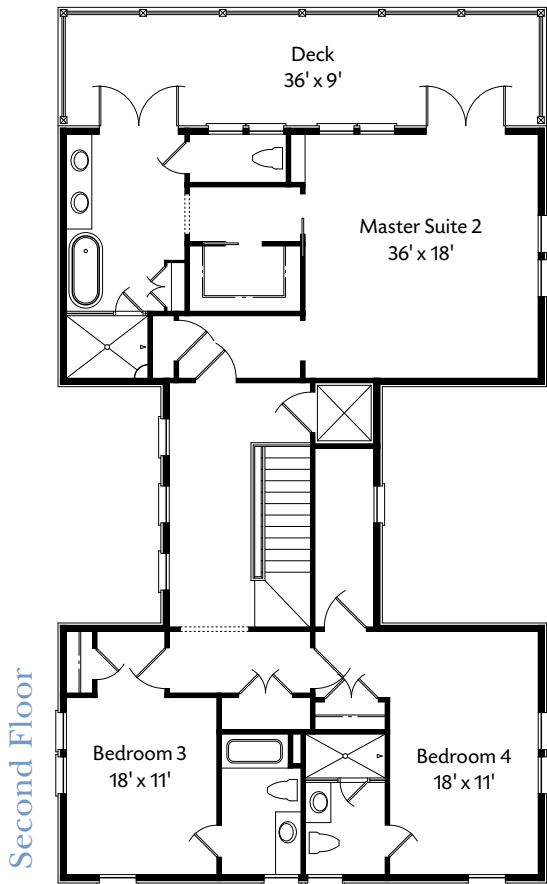
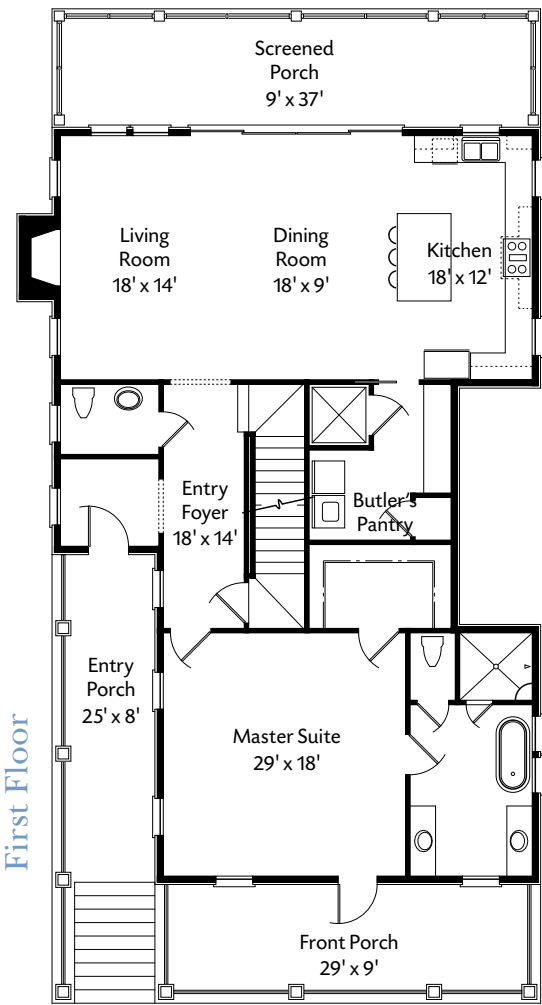
Visuals are representative only and may differ from completed product. Pricing, Improvements, facilities, and programs are subject to change without prior notice. This information is deemed reliable but not guaranteed.



THE SAW PALM

Running along the Kiawah River, eleven acres of riverfront terrain set the stage for inspired Island living. RiverView, a private, gated neighborhood of cottages and townhomes, partners stunning water vistas and sunset views with easy access to Kiawah’s most popular amenities. Here, residents will enjoy:

- Opportunities for Membership in the Kiawah Island Club
- A private neighborhood pavilion and pool
- A private neighborhood dock with kayak launch
- Walking distance to Beachwalker Park or Kiawah Island Club beach access
- Low maintenance island ownership due to high quality materials and products
- Envious proximity to Freshfields Village, the amenities of Cassique, and Night Heron Park
- The dining, social, and cultural offerings of Charleston, just 21 miles away



4 Bedroom Plan <i>Double Master Suites</i>	
1st Floor	1,740 sq. ft.
2nd Floor	1,632 sq. ft.
Total Heated	3,372 sq. ft.
Covered Porches	770 sq. ft.
Open Decks	306 sq. ft.

5 Bedroom Plan
with Master Suite downstairs and four secondary bedrooms upstairs

Floor plans indicate approximate square footage and may vary from actual design specifications. Information is deemed reliable but not guaranteed.

THE SAW PALM

All-new construction and a Lowcountry-inspired design define the homes of RiverView. This newly built home will offer residents:

- 4-bedroom/4.5-bath home includes 3,372 heated and cooled sq. ft.
- The largest of RiverView’s floorplans
- A gracious screened porch maximizes views for inspired open-air entertaining
- Double master suites, each with its own private deck
- Spectacular views from the 2nd story deck that spans the width of the elevation
- Secondary bedrooms offer private, en suite bathrooms
- Gourmet kitchen, custom cabinetry throughout, and pre-wired for home technology and entertainment systems
- White oak flooring standard throughout; reclaimed hardwood available
- Wood-burning fireplace with optional gas log upgrade
- Raised elevation for two-car garage and abundant storage space on ground floor
- Optional elevator upgrade
- Available under-house, climate controlled storage area